



SAKURA

Making a mark in Industry

Marks, writes and paints on any surface.

Crayon Markers

Marks, writes and paints on any surface.

SAKURA MARKERS

WATER SOLUBLE

INDUSTRIAL SUPPORTERS



SOLID MARKER

SOLIDIFIED PAINT FOR LOW TEMPERATURE
Thermal resistance of paint: 100°C ~ -40°C (212°F ~ -40°F)
Kylmänkestävä jahti -40°C

SAKURA COLOR PRODUCTS CORP. Made in Japan Item #30-1



SOLID MARKER

SOLIDIFIED PAINT FOR HIGH TEMPERATURE
Thermal resistance of paint: 200°C ~ -10°C (392°F ~ 14°F)

SAKURA COLOR PRODUCTS CORP. Made in Japan Item #30-1



SOLID MARKER

SOLIDIFIED PAINT FOR HIGH TEMPERATURE
Resists Paints, Paints, Paints, Paints
Thermal resistance of paint: 200°C ~ -10°C (392°F ~ 14°F)

VOL. 1

1

Paint Marker

Paint Marker

Working Temp.: Room Temp. (5°C ~ 40°C)

Ink type: Pigment xylene ink (regular color)

Pigment alcohol ink (gold, silver & white)

Nib: Semi-Hard (fiber | fine & medium)

Line width: 1.0 mm (fine)

2.0 mm (medium)

Size: 138 mm (fine)

142 mm (medium)

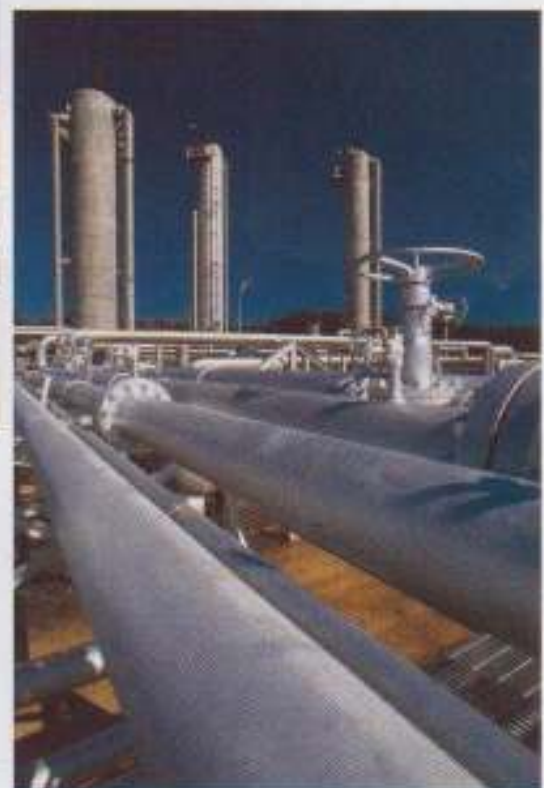
Color: (medium only)

Feature: Water Proof Fade Proof

Unit (inner/outer): 12 / 576 pens



Quick dry.
Clear colors.
Wide line width.
Strong adhesion.



Metal Marker

Paint Marker

Working Temp.: Room Temp. (5°C - 40°C)

Unit (inner/outer): 10 / 80 pens

Ink type: Pigment alcohol ink

Nib: Semi-Hard (fiber)

Line width: 10.0 mm (bold)

3.0 mm (medium)

2.0 mm (fine)

Size: 152 mm (bold & medium)

142 mm (fine)

Color: 20 25 29 3 50

49 (bold)

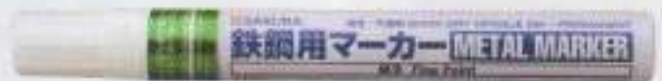
Feature:



Water Proof



Fade Proof



Quick dry.
Clear colors.
Wide line width.
Strong adhesion.
Refillable ink and nibs



No Bleeding.
Over paintable.

Low Halogen Marker

Solidified Paint

Working Temp.: -40°C ~ 100°C

Unit (inner/outer): 12 / 432 pens

Ink type: Pigment alcohol ink

Diameter: 12.0 mm

Size: 135 mm

Color: 49 19 3 50

Feature:



Water Proof



Fade Proof



Chemical Proof



Low Halogen



Suitable for rust-less parts.

Suitable for most surfaces.

Clear and tough color against tough condition (direct sunshine, rain, snow, etc).

Halogens and metals are less than 200 ppm for each element.



Test Report

Elements	White	Yellow	Red	Black
Chloride (Cl ⁻)	N.D.	N.D.	N.D.	N.D.
Bromide (Br ⁻)	N.D.	N.D.	N.D.	N.D.
Fluoride (F ⁻)	N.D.	N.D.	N.D.	N.D.
Iodide (I ⁻)	N.D.	N.D.	N.D.	N.D.
Iron (Fe)	< 30 ppm	< 50 ppm	< 60 ppm	N.D.
Copper (Cu)	< 30 ppm	< 50 ppm	< 60 ppm	N.D.
Zinc (Zn)	< 30 ppm	< 50 ppm	< 60 ppm	N.D.
Lead (Pb)	< 10 ppm	N.D.	< 20 ppm	N.D.
Mercury (Hg)	< 10 ppm	N.D.	< 20 ppm	N.D.
Sulfur (S)	< 230 ppm	< 150 ppm	< 200 ppm	< 120 ppm

Detection

Halogens: With reference to EN 14582: 2007 | Analysis was performed by Ion Chromatograph.

Metals: With reference to US EPA Method 3052:1996 | Analysis was performed by ICP-OES.

Solid Marker™

Solidified Marker

Working Temp.: -10°C ~ 200°C

Ink type: Pigment alcohol ink

Diameter: 12.0 mm

Size: 135 mm

Color: 49 19 36 29 3 5 24 50

Feature:



Water Proof



Fade Proof



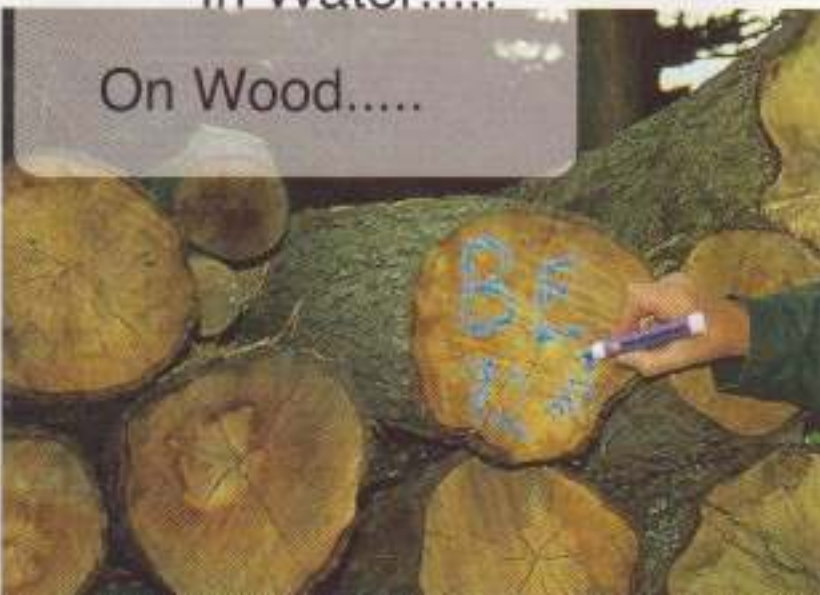
Chemical Proof

Unit (inner/outer): 12 / 432 pens



On Metal.....

In Water.....



On Wood.....





Most surfaces.

Up to 200°C

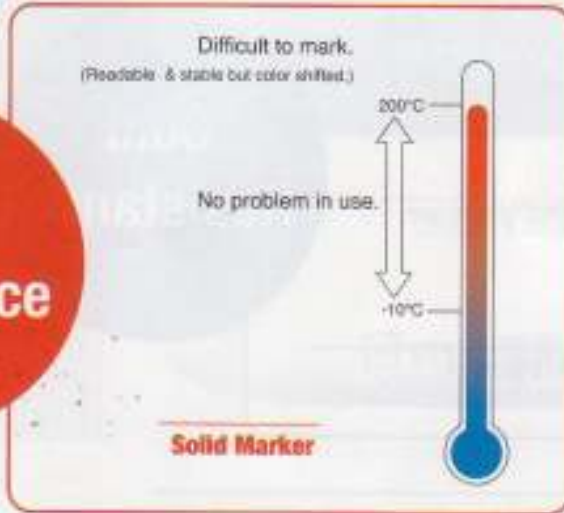
On Steels.....

On Rubbers.....

Tough against heavy weather



Heat Resistance



Solid Marker for Low Temperature

Solidified Marker

Working Temp.: $-40^{\circ}\text{C} \sim 100^{\circ}\text{C}$

Ink type: Pigment alcohol ink

Diameter: 12.0 mm

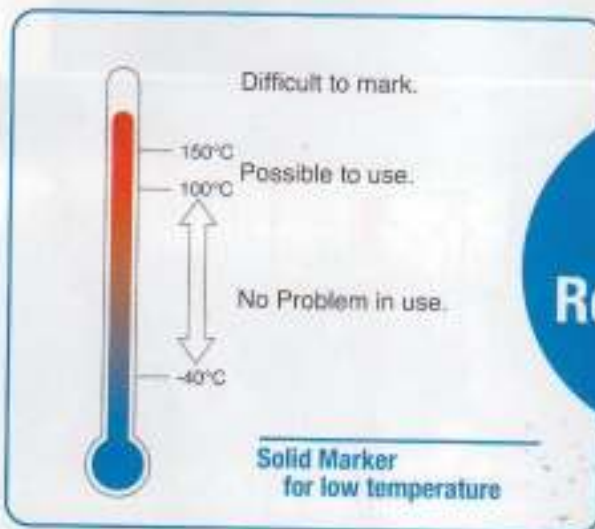
Size: 135 mm

Color: 49 19 36 29 3 50

Feature:  Water Proof  Fade Proof
 Chemical Proof

Unit (inner/outer): 12 / 432 pens

Suitable for cold circumstance, -40°C .



Cold Resistance



Solid Marker Slim

Solidified Marker

Working Temp.: $-10^{\circ}\text{C} \sim 200^{\circ}\text{C}$

Ink type: Pigment alcohol ink

Diameter: 8.0 mm

Size: 125 mm

Color: 49 19 3 50

Feature:  Water Proof  Fade Proof
 Chemical Proof

Unit (inner/outer): 12 / 432 pens



Solid Marker Luminescent

Solidified Marker

Working Temp.: -10 °C- 120°C

Ink type: Pigment alcohol ink

Diameter: 12.0 mm

Size: 135 mm

Color: ⑤⑥

Feature:



Water Proof



Fade Proof

Unit (inner/outer): 12 / 432 pens



Grow-in-the-dark ink.

(avoid the condition under than pH 2.0)



Suitable for caution point
or marking as safety sign.

Solid Cleaner

Solidified Solvent

Working Temp.: Room Temp. (5°C ~ 40°C)

Diameter: 12.0 (mm)

Size: 135 mm

Color: ⑥⑦

Feature:



Water Proof



Fade Proof

Unit (inner/outer): 10 / 300 pens



Removable from
Glass, Steel, Plastic etc.

Removable markers,
Painting inks, Paints etc.

Stains already soaked through
certain porous surfaces (paper,
fabric, wood) cannot be removed.



Water Soluble Marker

Working Temp.: Room Temp. (5°C – 40°C)

Ink type: Pigment & Wax

Diameter: 15.0 mm

Size: 125 mm

Color: 49 19 3 50

Feature:



Water Proof



Fade Proof



Removable easily by cloth and water.

Water Soluble Marker

Unit (inner/outer): 10 / 200 pens



Crayon Marker

Working Temp.: Room Temp. (5°C ~ 40°C)

Ink type: Pigment & Wax

Diameter: 15.0 mm

Size: 125 mm

Color: 49 19 3 50

Feature:



Water Proof



Fade Proof



Traditional Lumber crayon.
Removable by cloth.

Lumber Crayon

Unit (inner/outer): 10 / 200 pens

